

ALEXA MINI



CONFIGURATION OVERVIEW – 1.9.0 / 2015.05

ARRI assumes no responsibility with regard to the performance or use of the products or typographical errors or inaccuracies of given information. Product specifications are subject to change without notice. For a full listing of all available components consult the price list.

ALEXA Mini

ALEXA Mini Body, K1.0003873
includes: camera body, USB stick, 2.4 GHz Antenna, Toolset, Quick Guide, CD with documentation

no picture yet



ALEXA Mini Viewfinder MVB-1, K2.0005861

Transvideo Starlite HD5-ARRI 5" OLED Monitor, K2.0006960



ALEXA Mini Accessory / Lens Control Sets

Base Accessory Set for ALEXA Mini: K0.0006953

Includes:
K2.0006334 - MINI Adapter Plate MAP-1
K2.0006347 - MINI Adapter Plate MAP-2
K2.0006348 - MINI Side Bracket MSB-1 (2x)
K2.0006186 - Rod Mounting Bracket RMB-3
K2.66255.0 - 15 mm Reduction Insert
K2.0006140 - MINI Viewfinder Bracket MVB-1
K2.73002.0 - Camera Center Handle CCH-2
K2.72021.0 - Ethernet Cable 3m KC 153-S
K2.75007.0 - Power Cable Straight KC-50 (2m, 6.6 feet)
K2.0001242 - CFast 2.0 Card Reader
K2.0003623 - CFast 2.0 Card 128 GB (3x)

Pro Accessory Set for ALEXA Mini: K0.0006954

Includes:
K2.0006334 - MINI Adapter Plate MAP-1 (2x)
K2.0006347 - MINI Adapter Plate MAP-2 (2x)
K2.0006348 - MINI Side Bracket MSB-1 (2x)
K2.0006186 - Rod Mounting Bracket RMB-3 (2x)
K2.66255.0 - 15 mm Reduction Insert (2x)
K2.0006140 - MINI Viewfinder Bracket MVB-1
K2.73002.0 - Camera Center Handle CCH-2
K2.72021.0 - Ethernet Cable 3m KC 153-S
K2.75007.0 - Power Cable Straight KC-50 (2m, 6.6 feet)
K2.0001242 - CFast 2.0 Card Reader
K2.0003623 - CFast 2.0 Card 128 GB (3x)
K2.0006352 - Bridge Plate Adapter, BPA-4
K2.66252.0 - Rods 15 mm 340 mm
K2.0006471 - Battery Adapter Plate, BAP-1
K2.0006807 - Camera Shoulder Pad, CSP-1

ALEXA Mini Lens Control Set: K0.0006971

Includes:
K2.72103.0 - Wireless Compact Unit WCU-4
K2.72133.0 - Pre-Marked Focus Ring 12" for WCU-4
K2.72136.0 - Pre-Marked Focus Ring 3'6" for WCU-4
K2.72129.0 - Pre-Marked Focus Ring 0.25m for WCU-4
K2.72132.0 - Pre-Marked Focus Ring 1.00m for WCU-4
K2.72117.0 - White Focus Ring for WCU-4 or SXU-1
K2.0006501 - WCU-4 Plate
K2.47851.0 - NP-FM500H Sony Battery (3x)
K2.0002065 - BC-QM1 Sony Battery Charger Sony
K2.0006355 - cforce mini (Basic Lens Motor Set)
K2.0006750 - Cable LBUS (0.3m/1ft) (2x)
K2.72146.0 - Carrying Case for WCU-4 and accessories
Note:
10.000268 ALEXA Remote License for WCU-4 not included - has to be ordered separately

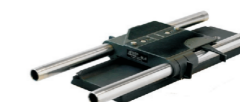
ALEXA Mini Mechanical Accessories



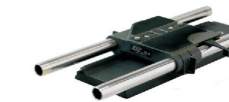
MINI Adapter Plate MAP-1, K2.0006334



MINI Adapter Plate MAP-2, K2.0006347



Bridge Plate BP-8
K2.47090.0



Bridge Plate BP-9
K2.47091.0



Bridge Plate Adapter BPA-4, K2.0006352



MINI Side Bracket MSB-1, K2.0006348

Lens Mounts and Adapter



Titanium PL LDS mount with L-Bus connector, K2.0003216



PL LDS Lens Mount
K2.0001107



B4 Lens Mount
K2.0001237



EF Lens Mount
K2.0001103



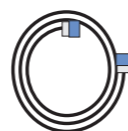
PL to B4 Lens Adapter
K2.0001238

Cables

Power Cable Straight KC-50 (2m, 6.6 feet), K2.75007.0
Power Cable Coiled, K2.0001275

Ethernet Cable 3m KC 153-S, K2.72021.0

Mini Viewfinder Cable 0.75m, K2.0006169



LBUS 0.2m/8", K2.0006749
LBUS 0.3m/1ft, K2.0006750
LBUS 0.5m/1.5ft, K2.0006751
LBUS 0.8m/2.5ft, K2.0006752
LBUS 1.5m/5ft, K2.0006753
LBUS 3m/10ft, K2.0006754
LBUS 6m/20ft, K2.0006755
LBUS 15m/49ft, K2.0006756

ALEXA Mini Media and Readers



CFast 2.0 Card 128 GB
K2.0003623



CFast 2.0 Card Reader
K2.0001242

ALEXA Mini Electrical Accessories



cforce Mini K2.0006355

LBUS cables need to be ordered separately - see cables

19 mm Studio Rods

540 mm, K2.72028.0
stainless steel
440 mm, K2.0001022
stainless steel
340 mm, K2.66269.0
stainless steel, lightweight
240 mm, K2.66270.0
stainless steel, lightweight
Lightweight rod set 185 mm
K2.55024.0
Lightweight rod set 165 mm
K2.55023.0

15 mm Studio Rods

540 mm, K2.72029.0
stainless steel
440 mm, K2.0001031
stainless steel
340 mm, K2.66252.0
stainless steel, lightweight
240 mm, K2.66253.0
stainless steel, lightweight
140 mm, K2.66254.0
stainless steel, lightweight

Handgrip Set



LBS-2 Handgrip Set without on/off **K0.0000465**

Consists of:
Handgrip without on/off switch K2.47861.0 (2x)
Handgrip Extension long K2.47863.0 (2x)
Lightweight Bridge Support, LBS-2 K2.66275.0 (1x)

15 mm Reduction Insert
K2.66255.0



Battery Adapter Plate BAP-1, K2.0006471

Camera Center Handle CCH-2, K2.73002.0



Camera Shoulder Pad CSP-1, K2.0006807