

GENUS PRODUCTS

Matte Boxes  
Hurricane Rig Systems  
Shoulder Mount Systems  
Support Bar Systems  
Adaptor Plates  
Adaptor Rings & Donuts  
French Flags  
DSLR Camera Accessories  
and more

WARRANTY

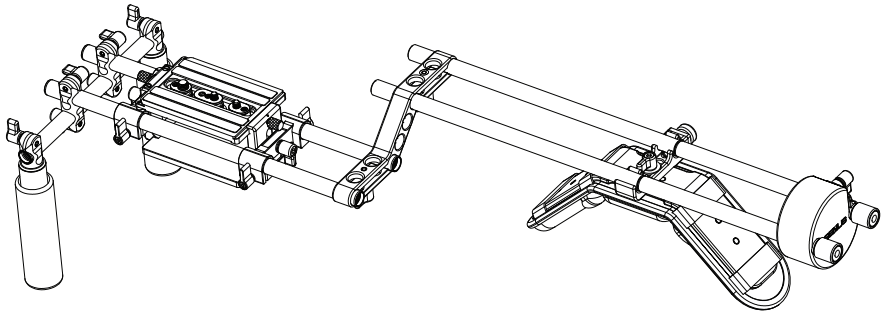
Your Genus Professional Video Shoulder Mount Kit  
with standard handle grips and offset bracket  
is covered by a one year warranty from the date of purchase.

Full terms and conditions of warranty can be found on our website

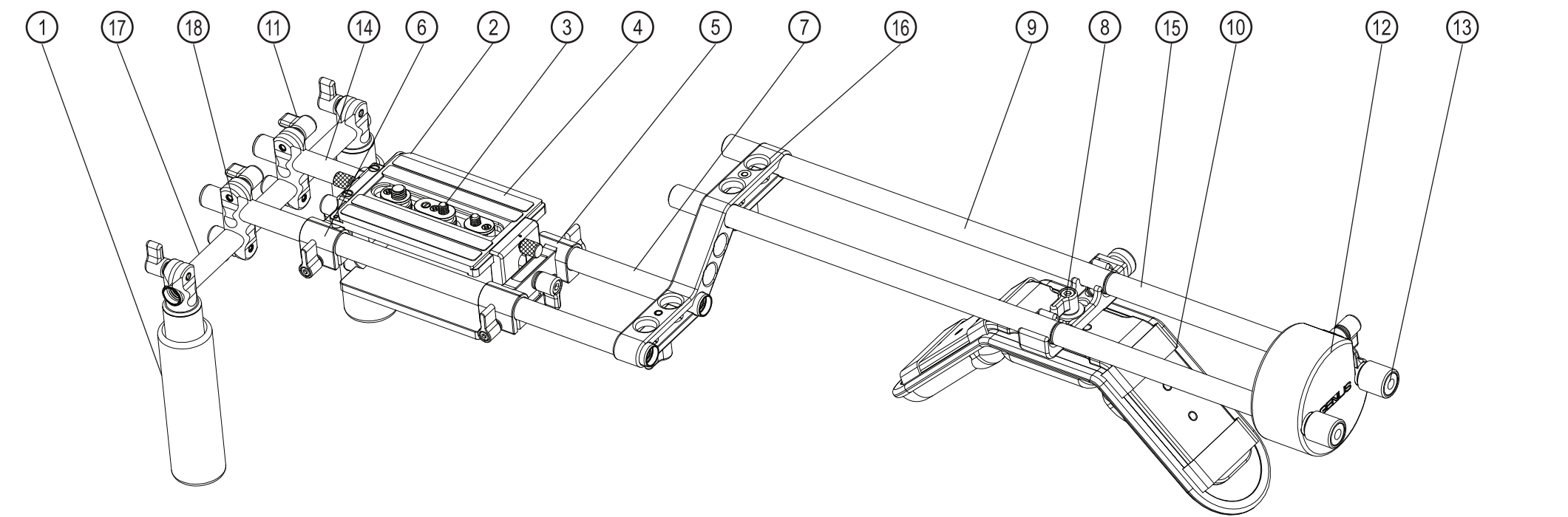
[www.genustech.tv](http://www.genustech.tv)

Date of Purchase

Dealer

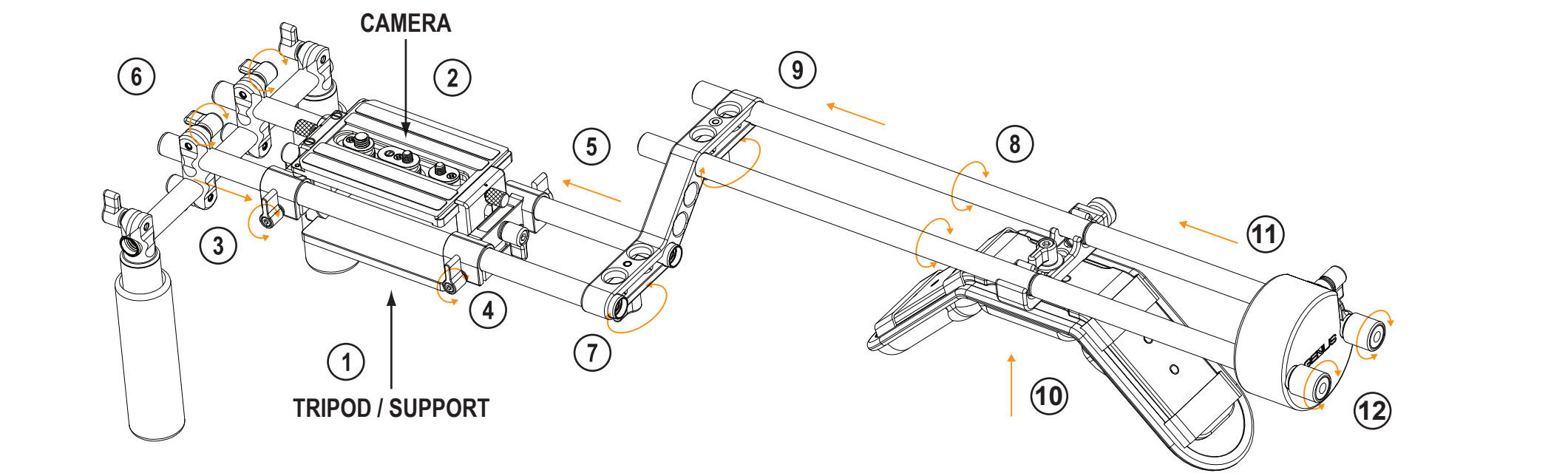


The **G-PROKIT1** Professional Video Shoulder Mount Kit with standard handle grips and offset bracket



DESCRIPTION	QUANTITY PER KIT	SKU / ORDER CODES
1 Handle with Rod Clamps and Foam Grip	x 2	GCSM-HGRIP
2 Uni-Plate without Rods	x 1	GMB/UP-WB (items 2,3,4,5 & 6)
3 Camera Screw	x 3	
4 Non-Slip Grip Pads	x 2	
5 Rear Rod Clamp	x 1	
6 Front Rod Clamp	x 1	
7 200mm Extension Rods (Front Rods)	x 2	GMB-EXT200
8 Universal Clip-On Adaptor with Lock-Off Knob	x 1	GCSM-ADP
9 350mm Rods with Dual Female Threads (Back Rods)	x 2	GMB-350DFT
10 Heavy Duty Shoulder Pad	x 1	GCSM-HDPAD
11 Lock-Off Knobs M4	x 6	
12 Counter-Weight	x 1	GCSM-COUW
13 End Stops	x 2	GCSM-ESR
14 300mm Rods (Front Rods)	x 2	GMB-300
15 100mm Extension Rods (Back Rods)	x 2	GMB-EXT100
16 Offset Bracket	x 1	GCSM-OBKT
17 215mm Rod (Handle Rod)	x 1	GMB-215
18 Right Angle Bracket Clamps	x 2	GCSM-RAB

Instructions (recommended)\*



Assembling the Professional Video Shoulder Mount Kit with standard handle grips and offset bracket

- 1 If attaching to tripod. Attach tripod quick release plate to base of Uni-plate via the appropriate screw holes on base.
- 2 Attach camera to top of Uni-plate via the camera screws that match those on base of camera.
- 3 Screw two 200mm Extension Rods (Front Rods) into two 300mm Rods (Front Rods).
- 4 Loosen the lock-offs on front and rear rod clamps.
- 5 Feed the front rods (GMB-300 + GMB-200EXT) through holes in front, rear rod clamps and tighten the lock-offs.
- 6 Thread the front rods (GMB-300 + GMB-200EXT) through the Right Angle Bracket with Handles and 215mm Rod. Tighten the lock-off knobs on the Right Angle Bracket.
- 7 Feed the front rods (GMB-300 + GMB-200EXT) through holes of the Offset Bracket and tighten its lock-off knob.
- 8 Screw two 100mm Extension Rods (Back Rods) into two 350mm Rods with Dual Female Threads (Back Rods).
- 9 Feed the front rods (GMB-350DFT + GMB-100EXT) through holes of the Offset Bracket and tighten its lock-off knob.
- 10 Clip on the Shoulder Pad / Clip-On Adaptor onto the Back Rods with the Universal Clip-On Adaptor lock-off knob facing outwards. Tighten the lock-off knob.
- 11 Thread the counter-weight on the rear end of the Back Rods. Adjust the position of the weight on the Rods to find the optimum balance. Tighten the lock-off knobs.
- 12 Screw the End Stops on to the female threads of the 350mm Rods with Dual Female Threads (Back Rods) as an extra step to secure the Counter-Weight.

Fine Adjustment

The positioning of your camera, lens, handles, shoulder pad and counterweight will differ with each individual and also depends on the set up you are using. Fine adjustments may have to be made to achieve the right balance and to make sure the system feels comfortable to you.

Please ensure that all Lock-Off Knobs are fully tightened after final adjustments.