

FOCUS 22 ✓

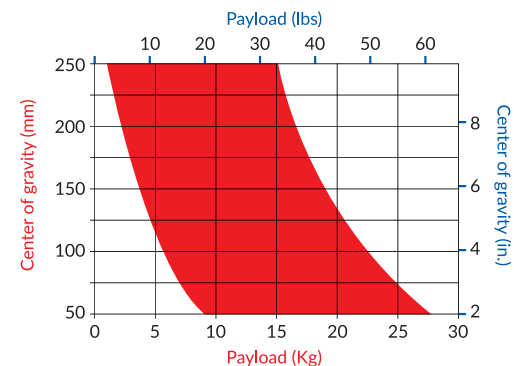
The new FOCUS 22 can space between 3 to 22 Kg (6.6 lbs to 49 lbs) camera payloads and combines the precision of the CARTONI patented labyrinth Fluid module with an exceptionally wide range of perfect counterbalance.

Extremely versatile it fills all the needs for fast moving ENG crews but also the precision demand of Digital Cinematographers.

Rugged yet easy to operate the new Focus 22 has all the ergonomic settings at the right place, positive locks, a wide range sliding platform incorporating the European style quick release plate and an illuminated spirit level.

FOCUS 22, weighs only 4 kg (8.8 lbs) thanks to the extensive use of extremely lightweight magnesium alloys.

Available option: a Flat/150 mm base version for Pedestals, tripods or any 150 mm bowl, also interfacing directly to sliders via the central 3/8" thread.



SPECIFICATIONS

Max Payload capacity	22 Kg	49 lbs
Weight	3,9 Kg	8.6 lbs
Bowl diameter	100mm / 150mm / Flat	
Tilt range	± 90°	
Pan range	360°	
Counterbalance	Continuous	
Fluid Drag	Continuous	
Camera attachment	Euro-style quick release	
Temperature range	-40°/+60° C -40°/+140° F	



Flat/150mm base version



SDS TRIPOD SYSTEM

SMART DEPLOYMENT SERIES

The SDS system expands on the famous SMART STOP two stage/single lever tripod technology with the addition of new SMART LOCK mid-level spreader, featuring a patented "no-bind" mechanism for quick spread and collapse capability.

Combined, these Smart-features create the most intelligent and fastest deployed tripod in the industry. Easily identifiable by its characteristic red rod trigger mechanism and ergonomic carry handle, the SDS 75mm / 100mm tripods are available in both Aluminum and Carbon Fiber.

When paired with the FOCUS line of Fluid Heads, they become essential systems for Broadcast ENG, Documentary Film, Content Creation or any application where quick setup and teardown is required.

SMART STOP TRIPOD

These super fast smart action 75mm / 100mm bowl base tripods feature a 2 stage leg extension, 3 levers and are effortless to open & lock. The SDS Smart Deployment Series **SMART STOP** is the fastest ENG Tripod available on the market.

Optimal partner to support the CARTONI FOCUS Heads or any other 75mm / 100mm bowl based Heads.

The SMART STOP clamping lever is a CARTONI patented mechanism which releases and locks both stages legs with a single action. The second stage will automatically deploy only when the first stage is fully extended.

The tripod has an exceptional torsional rigidity, accepts mid-level or floor spreaders and Dollies. A practical carrying handle completes the system which is available both in Aluminum or Carbon Fiber.



SPECIFICATIONS

Material	Carbon fiber	
Max Payload capacity	60 Kg	132 lbs
Weight	2,9 Kg	6.3 lbs
Bowl diameter	75mm / 100mm	
Stage	2	
Maximum height	155 cm	61 in.
Minimum height	50 cm	19.6 in.
Folded length	73 cm	28.7 in.
Optional Aluminum version weight	3,1 Kg	6.8 lbs

SMART LOCK SPREADER

The CARTONI SDS Smart Deployment Series **SMART LOCK** mid-level spreader, featuring a patented CARTONI "no-bind" mechanism for quick spread and collapse capability, is a built-in spreader with a unique 2 stage deployment concept.

Made of high performance composite, the SMART LOCK weight only 460 gr (1 lbs).

A side button on each arm releases the 2 sections, while the same retract by simply pushing them in.

The spreader fits to any CARTONI DV and ENG tripod with a quick release hook.

The practical strap fixed to the center ring of the spreader and to the tripod base speeds the folding of the system by one single move.



3/18

CARTONI

PROFESSIONAL CAMERA SUPPORT

FOCUS ✓

Made in Italy for Lightweight High-Performance Cameras



SMART DEPLOYMENT SERIES
75 mm & 100 mm



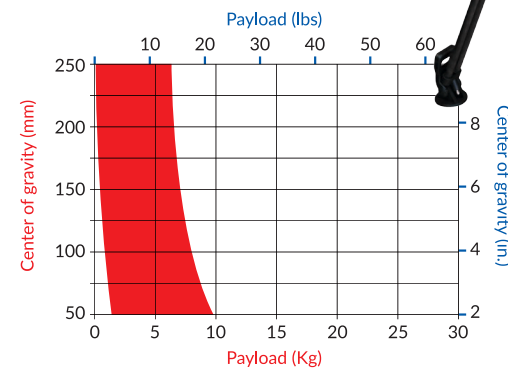
CARTONI S.p.A.
Via Giuseppe Mirri, 13 - 00159 Roma
Tel. +39 06.4382002 - Fax +39 06.43588293
e-mail: cartoni@cartoni.com

FOCUS 8 ✓

The FOCUS 8 is one of the best weight-to-payload ratios in the industry although extremely compact and ultra lightweight it carries all the professional features of a CARTONI Fluid Head.

The patented Fluid drag and counterbalance of 0 to 8 kg (0 - 17.7 lbs) delivers an exceptional response at all angles and at all speeds.

Its portability, easy setup, innovative sliding camera plate - compatible with Sachtler Ace and Manfrotto sliding plates - makes it a very easy companion to the mirrorless and DSLR shooter and ideal for news operations.



SPECIFICATIONS

Max Payload capacity	8,0 Kg	17.7 lbs
Weight	1,8 Kg	4.0 lbs
Bowl diameter	75mm	
Tilt range	± 90°	
Pan range	360°	
Counterbalance	Continuous	
Fluid Drag	Continuous	
Camera attachment	Sliding plate	
Temperature range	-40°/+60° C	-40°/+140° F



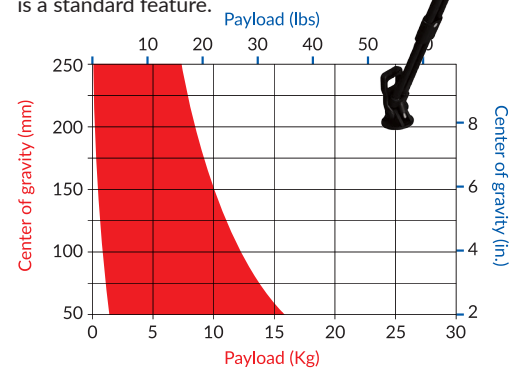
FOCUS 12 ✓

The FOCUS 12 combines the extreme versatile patented "Wing" counterbalance from 0 to 12 kg (0 - 26 lbs) with an exceptional smooth and ergonomic operational performance.

The new Euro-style quick release plate for fast setup and easy balancing is compatible with all the leading Camera support brands for full interchangeability wherever you shoot.

Sturdy yet lightweight, FOCUS 12 is the ideal mate for news and documentary productions.

The switchable illuminated bubble level is a standard feature.



SPECIFICATIONS

Max Payload capacity	12 Kg	26 lbs
Weight	2,5 Kg	5.5 lbs
Bowl diameter	100mm	
Tilt range	± 90°	
Pan range	360°	
Counterbalance	Continuous	
Fluid Drag	Continuous	
Camera attachment	Euro-style quick release	
Temperature range	-40°/+60° C	-40°/+140° F

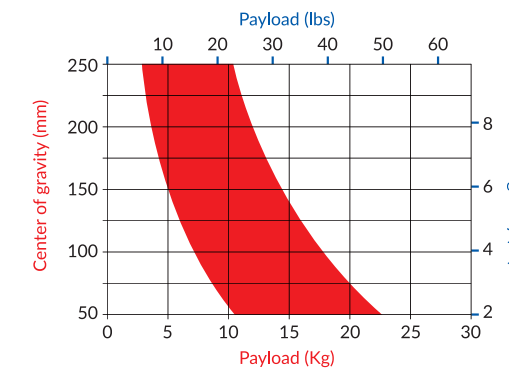


FOCUS 18 ✓

Compact, extremely rugged, built for the rigors of field operations, the FOCUS 18 is the ideal partner for ENG or Studio configurations.

It features a fast setup quick release Euro-style Camera plate for -90°/+70° tilt angle or a sliding platform for full +/-90° tilt requirements.

The CARTONI patented Fluid modules and counterbalance system of 6 to 18 kg (13 to 40 lbs) ensure precise and ultra-smooth operation even with full lens and accessory combinations.



SPECIFICATIONS

Max Payload capacity	18 Kg	40 lbs
Weight	3,5 Kg	7.7 lbs
Bowl diameter	100mm	
Tilt range	± 90°	
Pan range	360°	
Counterbalance	Continuous	
Fluid Drag	Continuous	
Camera attachment	Euro-style quick release	
Temperature range	-40°/+60° C	-40°/+140° F

