

Matte Box 20 II, MB-20 System II (5,65" x 5,65")*

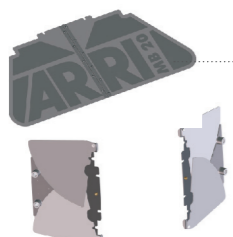
* discontinued items
only as long as stock is available



CONFIGURATION OVERVIEW – 8.7.2 / 2013.07

ARRI assumes no responsibility with regard to the performance or use of the products or typographical errors or inaccuracies of given information. Product specifications are subject to change without notice. For a full listing of all available components consult the price list.

Light Protection



Hard Matte Sets
2/3" Video Format 4:3
K2.47689.0
2/3" Video Format 16:9
K2.47690.0
35 mm Film
K2.47691.0

Top flag, K2.47740.0
Bottom flag, K2.47740.0
Side flag (pair), K0.60029.0

F5 Filter frames



4" x 6" Filter frame, vertical
K2.66023.0
4" x 5,65" Filter frame, horizontal
K2.65048.0
4" x 5,65" Filter frame, vertical
K2.65049.0
5" x 6" Filter frame, vertical
K2.66024.0
Filter frame combo
4" x 5,65" / 5 x 5, K2.65023.0
5,65" x 5,65" / 5 x 6, K2.65022.0
4" x 5,65" / 4 x 4, K2.65095.0
5,65" x 5,65" / 4 x 5,65" K2.65148.0

Carriers & Filter Stages

SET configurations (Many MB-20 assortments are now available in 3-stage versions. The addition of the third stage may however limit wide-angle use). Rear reflex ring and filter trays must be ordered separately:



MB-20-System II complete set for LWS, with light shields (2-Stage) K0.60030.0
Set includes: mattebox components K2.47738.0, K2.65032.0, K2.65028.0, K2.65026.0, K2.65025.0 and light shields K2.47740.0, K0.60029.0.



MB-20-System II complete set for LWS, without light shields (2-Stage) K0.60040.0
Set includes: mattebox components K2.47738.0, K2.65032.0, K2.65028.0, K2.65026.0 (2-filter stage), K2.65025.0



MB-20-System II complete set for LWS, without light shields (3-Stage) K0.60040.A
Set includes: as K2.60040.0 but with K2.65089.0 3-filter stage instead of K2.65026.0



MB-20-System II Set for 19mm Studio Rods, without light shields K0.60044.0
Set includes: As K0.60040.0, plus Adapter for 19mm Studio Rods K2.47101.0.



MB-20-System II Set for 15mm Studio Rods, without light shields K0.60045.0
Set includes: As K0.60040.0, plus Adapter for 15mm Studio Rods K2.47102.0.

R7 Clamp-On Rings

fits in **clamp-on adapters** with \varnothing 130 mm

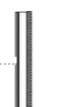
K2.47688.0 (\varnothing 128 mm) WA (for Fujinon HAe 3 x 5)
K2.47687.0 (\varnothing 128 mm) (not for Fujinon HAe 3 x 5)
K2.66064.0 (\varnothing 121 mm)
K2.47686.0 (\varnothing 120 mm)
K2.47685.0 (\varnothing 117 mm)
K2.47684.0 (\varnothing 114 mm)
K2.47683.0 (\varnothing 110 mm)
K2.65097.0 (\varnothing 105 mm)
K2.47682.0 (\varnothing 104 mm)
K2.66065.0 (\varnothing 103 mm)
K2.47681.0 (\varnothing 100 mm)
K2.47680.0 (\varnothing 98 mm)
K2.47679.0 (\varnothing 96 mm)
K2.65031.0 (\varnothing 95 mm) WA (for 13 x 4.5 mm Fujinon and 11 x 4.7 mm Canon)
K2.47678.0 (\varnothing 95 mm) (not for wide angle video zooms)
K2.47677.0 (\varnothing 92 mm)
K2.47676.0 (\varnothing 90 mm)
K2.47675.0 (\varnothing 87 mm) (for Zeiss Vario Sonnar)
K2.47674.0 (\varnothing 86 mm)
K2.47673.0 (\varnothing 85 mm)
K2.47672.0 (\varnothing 80 mm)-HS (for Zeiss Super Speed Lenses)
K2.47671.0 (\varnothing 80 mm) (for Video Lenses)

R2 Rings 143 mm

fits in filter stages with \varnothing 143 mm



138 mm filter ring
K2.47222.0* (\varnothing 100 mm)



Adapter ring 143-128 with screws - allows to use of R3 rings, K2.66086.0 → all R3 Rings



Large Diameter Wide-Angle Light Trap Rings (not for clamp on ring) reducing diameter from 143 mm to listed diameter
K2.66268.0 (\varnothing 136 mm)
K2.65245.0 (\varnothing 134 mm)
K2.65073.0 (\varnothing 132 mm)
K2.65072.0 (\varnothing 130 mm)
K2.65090.0 (\varnothing 128 mm)*
*for Fujinon 3 x 5 HAe Super Zoom)
K2.65071.0 (\varnothing 128 mm)*
*not for Fujinon 3 x 5 HAe Super Zoom)
K2.65123.0 (\varnothing 121 mm)
K2.65070.0 (\varnothing 120 mm)
K2.65069.0 (\varnothing 117 mm)
K2.65250.0 (Panasonic 3DA1)



Adapter Ring
Screws into R1 or R2 138mm round filter and reduces to 114 mm (4 1/2")
K2.49099.0

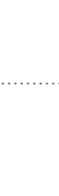


138 mm filter ring
K2.52204.0 (\varnothing 114 mm)

138 mm filter ring
K2.47190.0 (\varnothing 114 mm) (wide angle; internal focus lenses only)

R3 Rings 128 mm

fits in filter stages with \varnothing 128 mm



4 1/2" (114 mm) filter ring
K2.52205.0 (\varnothing 114 mm)
K2.49102.0 (\varnothing 95 mm)
K2.49109.0 (\varnothing 87 mm)



4 1/2" (114 mm) filter ring
for tight installation situations
K2.66067.0 (\varnothing 114 mm)

R5 Screw-In Rings 100 mm

Reduction rings (R5 | 100 mm)
K2.47224.0 (\varnothing 95 mm)
K2.65029.0 (\varnothing 95 mm WA) (WA = wide angle)
K2.65054.0 (\varnothing 92 mm)
K2.65040.0 (\varnothing 90 mm)
K2.47225.0 (\varnothing 87 mm)
K2.65039.0 (\varnothing 86 mm)
K2.65147.0 (\varnothing 85 mm WA)
K2.65038.0 (\varnothing 85 mm)
K2.65043.0 (\varnothing 80 mm)

R6 Screw-In Rings 87 mm

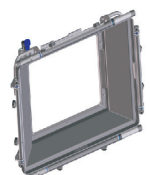
Reduction ring (R6 | 87 mm)
K2.47226.0 (\varnothing 80 mm)

R4 Screw-In Rings 114 mm

Reduction rings (R4 | 114 mm)
K2.65045.0 (\varnothing 110 mm)
K2.65096.0 (\varnothing 105 mm)
K2.52195.0 (\varnothing 104 mm)
K2.66066.0 (\varnothing 103 mm)
K2.65046.0 (\varnothing 100 mm)
K2.65044.0 (\varnothing 98 mm)
K2.65055.0 (\varnothing 96 mm)
K2.65271.0 (\varnothing 95 mm)
K2.65273.0 (\varnothing 95 mm WA)
K2.65156.0 (\varnothing 94 mm)
K2.65201.0 (\varnothing 93 mm)
K2.65163.0 (\varnothing 91 mm)
K2.65164.0 (\varnothing 89 mm)
K2.65272.0 (\varnothing 87 mm)
K2.65166.0 (\varnothing 85 mm)
K2.65232.0 (\varnothing 82 mm)
K2.65229.0 (\varnothing 81 mm)
K2.65165.0 (\varnothing 80 mm)

Basic Modules & Accessories

all accessories compatible to MB-20 System I (except: Basic Module K2.47738.0)



MB-20 System II Basic Module with Sunshade
K2.47738.0



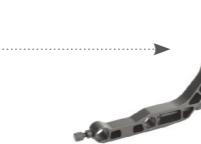
2-filter stage
K2.65026.0
3-filter stage
K2.65089.0 (K2.65028.0 needed)



Back 138 mm bellows adapter
K2.65028.0 (for use with R2 Rings)



Swing away module
K2.65032.0



Console for lightweight support
K2.65025.0 (requires swingaway module)



2-filter stage
K2.65158.0
3-filter stage
K2.65157.0 (for direct use with R1 Rings - for R1 Ring details see Config 8.0.0.)



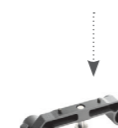
Clamp-On Adapter
K2.65030.0 (instead of swing away module) fits R7 Rings \varnothing 130 mm



Console for 235 side bracket
K2.65024.0
Rod Reduction to 15 mm, K2.47062.0



Case for MB-18 / 20
K2.49050.0 with variable dividers



Adapter for 19 mm Rods
K2.66039.0
Adapter for 15 mm Rods
K2.66040.0

CAUTION: RINGS CAN VIGNETTE. PLEASE CONTACT ARRI.

\varnothing = diameter of connection ring to lens

* discontinued items, only as long as stock is available